

Installation Instructions

MODEL 859

For Vehicles With Air Brakes

1. Horns should be mounted on top of cab tilted slightly downward for best sound projection.
2. If cab is equipped with roof trim panel, remove to install horns.
3. Drill $\frac{1}{2}$ " and $\frac{9}{32}$ " holes (using mounting pad for template) in position desired for horns. Locate position for front supports and drill $\frac{9}{32}$ " holes.
4. Place mounting pads between bases of horns and top of cab roof.
5. Assemble tension washers, mounting stems, bolts, nuts and lock washers to horns (bases and supports).
6. Connect tubing between Tee and mounting stems in base of horns as shown. Tighten fittings carefully.
7. Install manual valve in desired location at side of cab. Use valve angle bracket as template to drill two $\frac{3}{16}$ " holes. Install valve in bracket with two jam nuts supplied and attach to cab with two sheet metal screws supplied. Connect tubing between valve and Tee. Tighten fittings carefully.
8. Connect tubing from air supply to inlet on manual valve. Check air flow direction by arrow on valve.
9. Punch hole in trim panel for valve lanyard. Lace lanyard through panel. Replace panel, fasten lanyard to convenient trim screw.

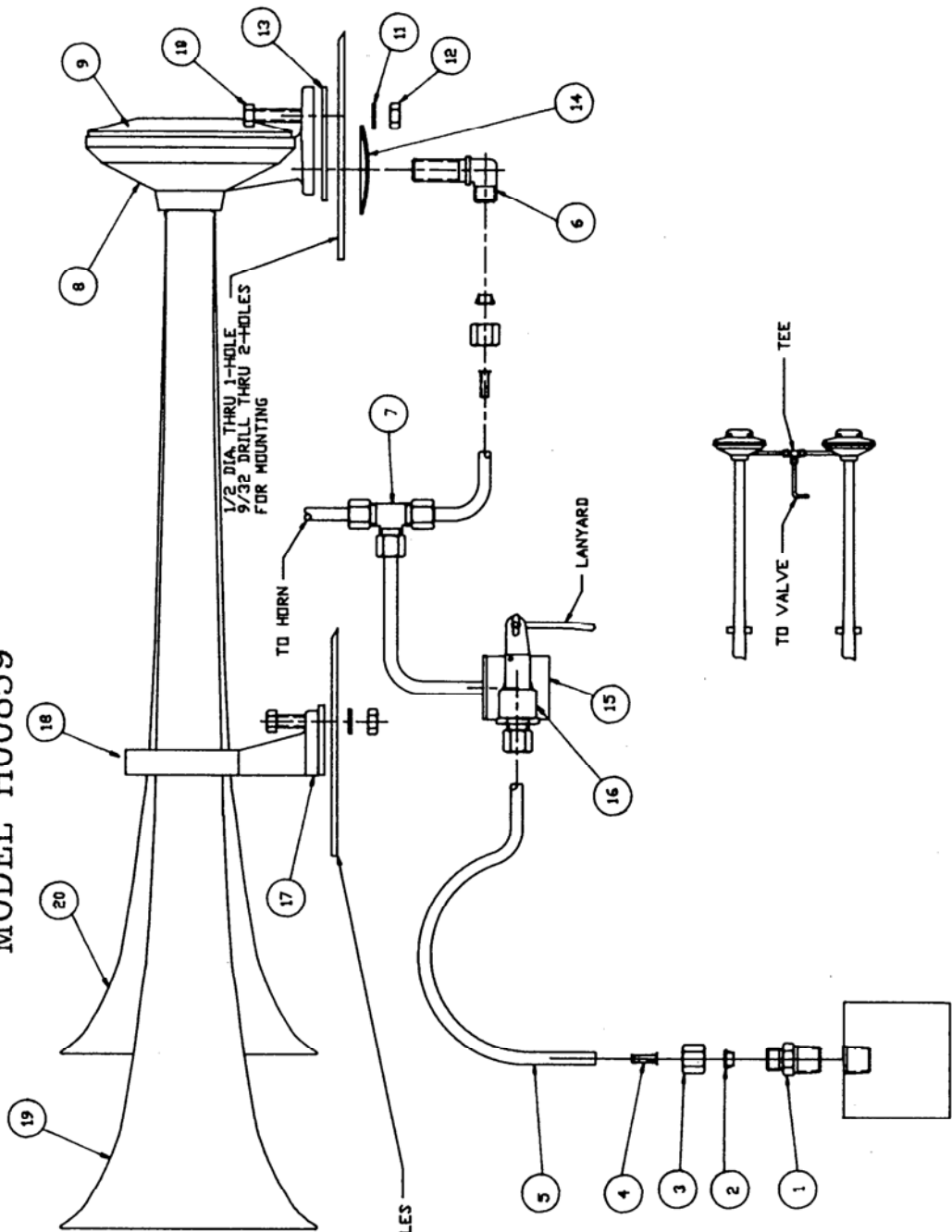
CAUTION: Check local noise abatement ordinances to avoid legal violations.

Important — Use Pipe Compound on Pipe Threads to Assure Air Tight Connections

All Hadley products carry a limited warranty for 12 months from date of purchase. We will repair or replace, at our option, defects in material and workmanship during that period when product is returned to our service department at the address below.

Hadley Products
2851 Prairie Street
Grandville, MI 49418

MODEL H00859



QTY	PART NO.	DESCRIPTION
1	H11880-3	PROJECTOR
1	H11880-1	PROJECTOR SUPP.
2	H13723	PROJECTOR SUPP.
2	H13724	MOUNTING PAD
1	H00755-19	VALVE ASSY
1	H11978	VALVE BRACKET
2	H11583	TENSION WASHER
2	H03727	MOUNTING PAD
2	H13603	NUT
2	H13606	LOCK WASHER
2	H13608	CAP SCREW
2	H13721	HORN BODY COVER
2	H13720	HORN BODY
2	H13644	TEE
2	H11477	MOUNTING STEM
1	H13710	TUBING
4	H12462	INSERT
4	H11081	NUT
4	H12463	SLEEVE
2	H1181	MALE CONNECTOR