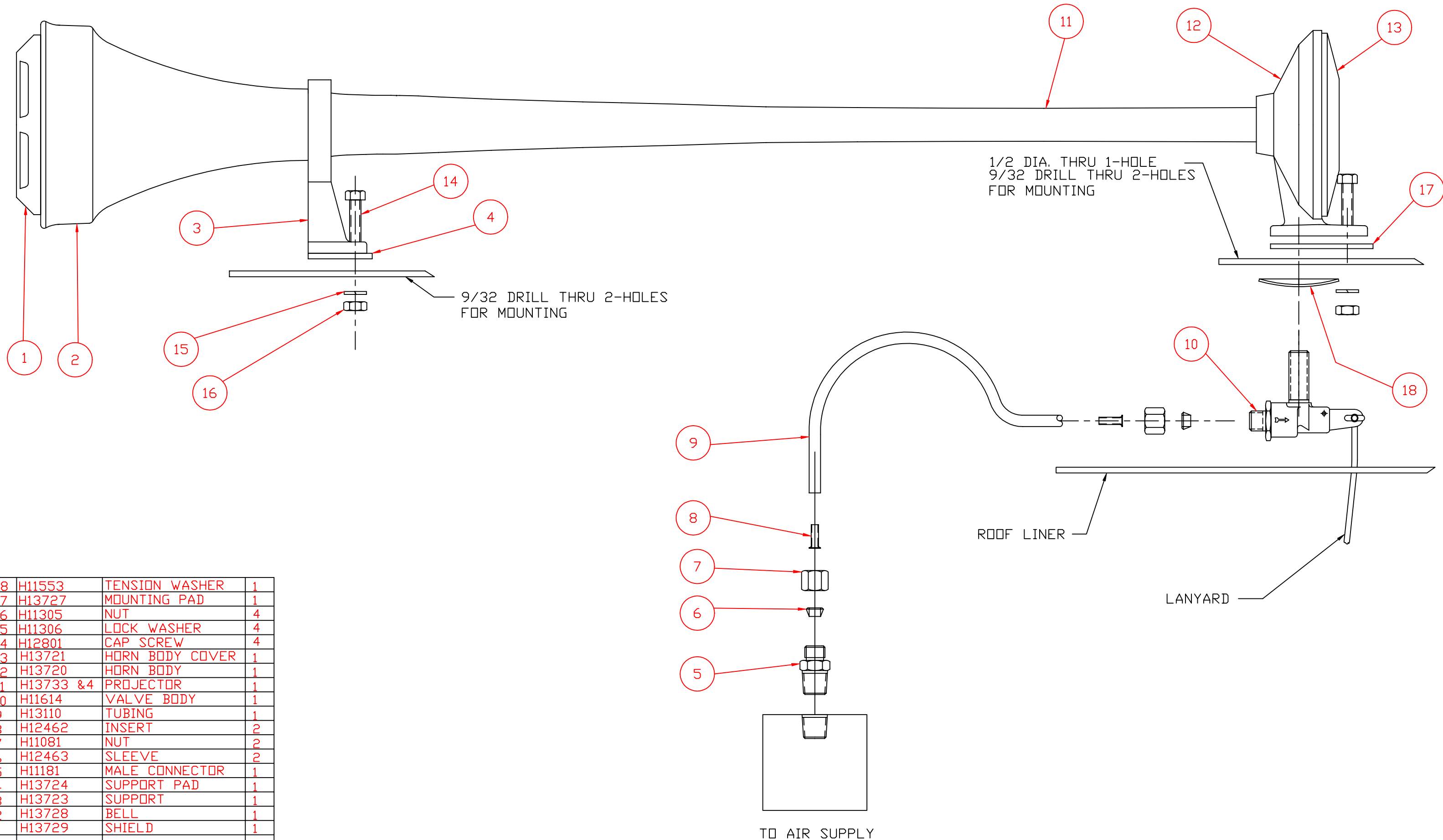


MODEL H00979 & H00980



18	H11553	TENSION WASHER	1
17	H13727	MOUNTING PAD	1
16	H11305	NUT	4
15	H11306	LOCK WASHER	4
14	H12801	CAP SCREW	4
13	H13721	HORN BODY COVER	1
12	H13720	HORN BODY	1
11	H13733 & 4	PROJECTOR	1
10	H11614	VALVE BODY	1
9	H13110	TUBING	1
8	H12462	INSERT	2
7	H11081	NUT	2
6	H12463	SLEEVE	2
5	H11181	MALE CONNECTOR	1
4	H13724	SUPPORT PAD	1
3	H13723	SUPPORT	1
2	H13728	BELL	1
1	H13729	SHIELD	1
ITEM	PART NO.	DESCRIPTION	QTY

Installation Instructions

MODEL 979 & 980

For Vehicles With Air Brakes

1. Horn should be mounted on top of cab tilted slightly downward for best sound projection.
2. If cab is equipped with roof trim panel, remove to install horn.
3. Drill $\frac{1}{2}$ " and $\frac{3}{32}$ " holes (using gasket for template) in position desired for horn base. Locate position for front support and drill $\frac{3}{32}$ " holes.
4. Place gasket between base of horn and top of cab roof.
5. Assemble valve and curved tension washer to horn along with support, bolts, nuts, lockwashers.
6. Connect tubing from air supply to inlet on manual lanyard valve.
7. Punch hole in trim panel for valve lanyard. Lace lanyard through panel. Replace panel, fasten lanyard to convenient trim screw.

CAUTION: Check local noise abatement ordinances to avoid legal violations.

Important — Use Pipe Compound on Pipe Threads to Assure Air Tight Connections

All Hadley products carry a limited warranty for 12 months from date of purchase. We will repair or replace, at our option, defects in material and workmanship during that period when product is returned to our service department at the address below.

Hadley Products
2851 Prairie Street
Grandville, MI 49418