

Installation Instructions

MODEL 900CA

For Vehicles With Air Brakes

1. Horns should be mounted on top of cab, tilted slightly downward for best sound projection.
2. If cab is equipped with roof trim panel, remove to install horns.
3. Drill ½” and 1 1/32” holes (using gasket for template) in position desired for horns.
4. Place Mounting Pad between base of horn and top of cab roof.
5. Assemble valve and curved tension washer to horn. Insert 5/16” bolt through front hole of base and tighten nut and lockwasher.
6. Connect tubing from air supply it inlet on manual lanyard valve.
7. Punch hole in trim panel for valve lanyard. Lace lanyard through panel. Replace panel, fasten lanyard to convenient trim screw.

CAUTION: Check local noise abatement ordinances to avoid legal violations.

Important – Use Pipe Compound on Pipe Threads to Assure Air Tight Connections

All Hadley products carry a limited warranty for 12 months from date of purchase. We will repair or replace, at our option, any defects in material and workmanship during this period when product and proof of purchase is returned to our service department at the address below.

HADLEY PRODUCTS

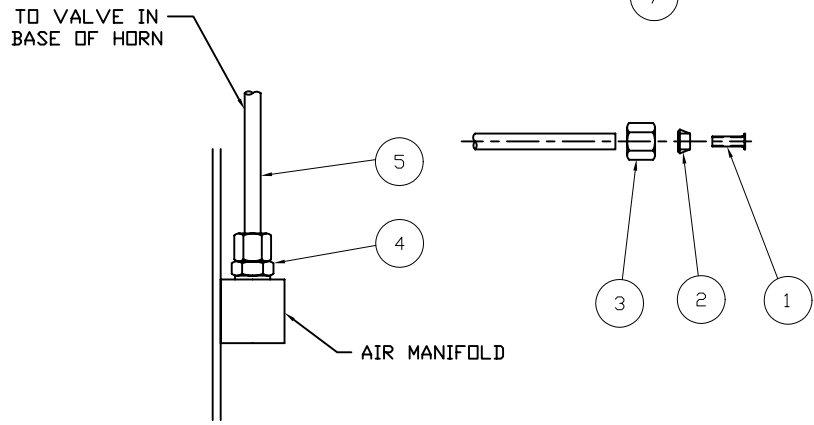
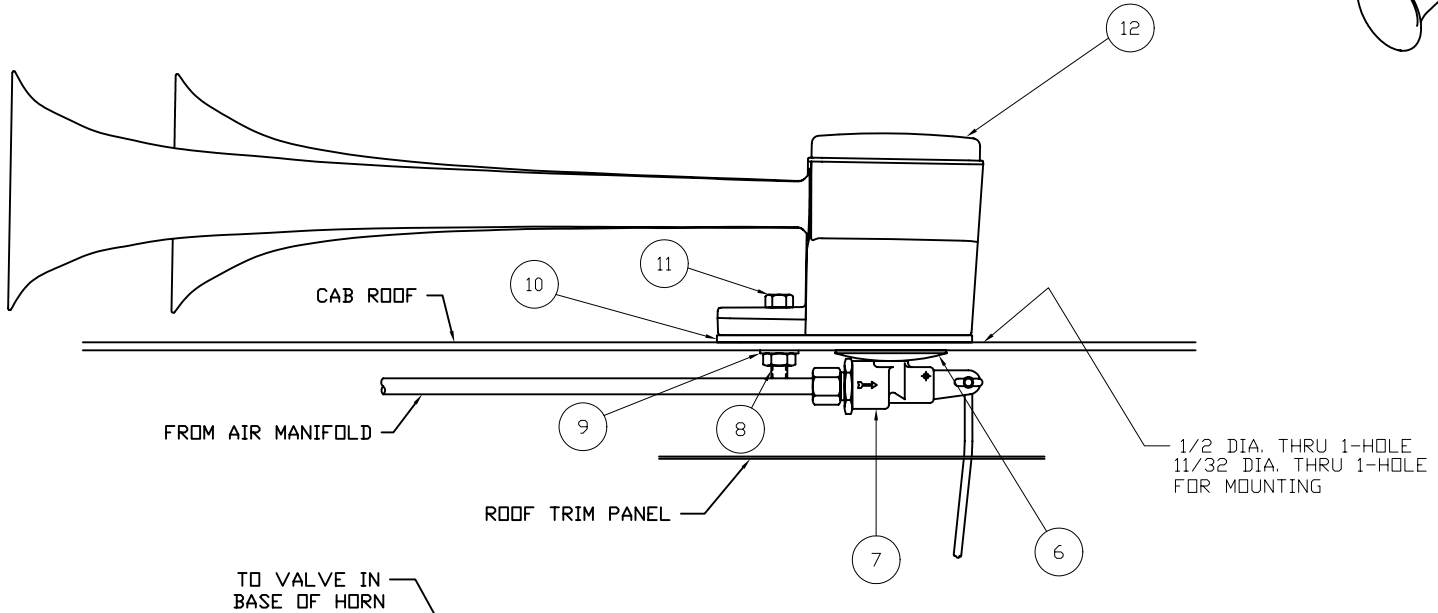
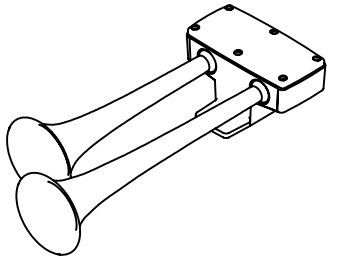
Attn: Service Department
2851 Prairie SW, Suite D
Grandville, MI 49418

Service Department Direct: 616-249-8462
Main: 616-530-1717
Fax: 616-530-3283



www.hadley-products.com

H00900CA



ITEM	PART NO.	DESCRIPTION	QTY
12	H00910CA	HORN ASSEMBLY	1
11	H11640	SCREW, HEX 5/16 - 18	1
10	H16504S	MOUNTING PAD	1
9	H10236	LOCK WASHER 5/16	1
8	H10241	NUT, HEX 5/16 - 18	1
7	H00755-1	VALVE ASS'Y	1
6	H11553	TENSION WASHER	1
5	H1311020S	TUBING	1
4	H11181	MALE CONNECTOR	1
3	H11081	TUBE NUT 1/4	2
2	H12463	SLEEVE, PLASTIC TUBE	2
1	H12462	INSERT, BRASS	2